

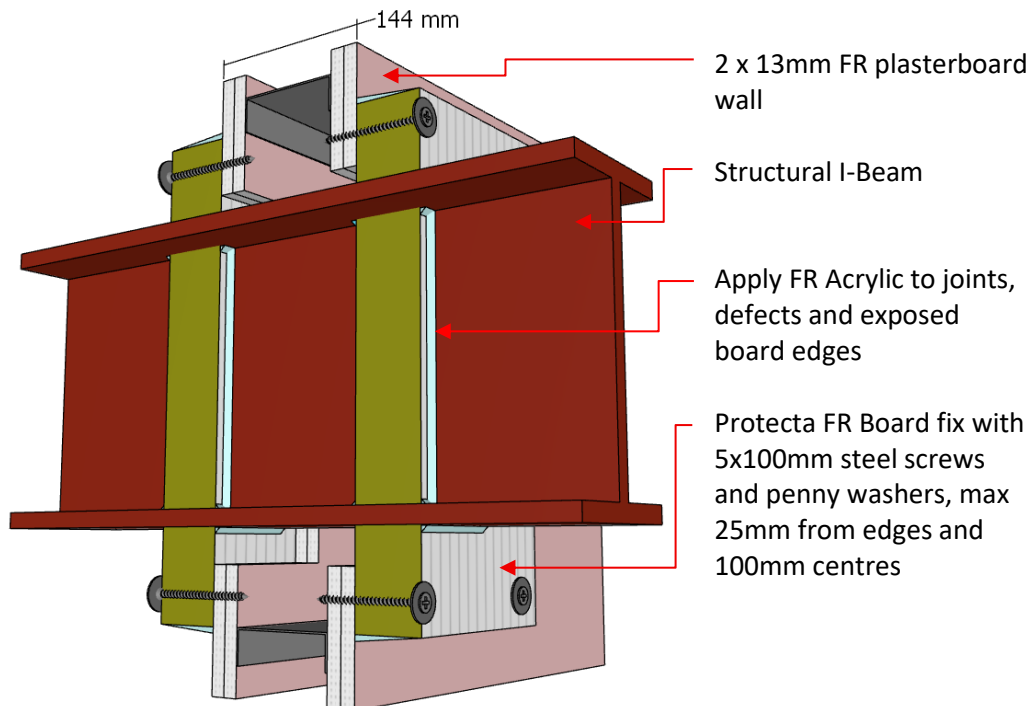
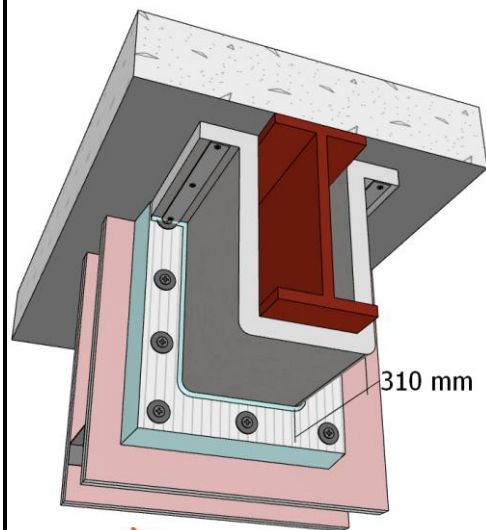


**Firestop  
Centre**  
Innovative Firestop Solutions

## System FC783

**Penetration Detail:** Structural I-Beam (250mm) fire-stopped with Protecta FR Board

**Separating Element:** Min. 144mm thick 2 x 13mm FR Plasterboard or Concrete Wall



### Installation Instructions:

1. Clean all surfaces of dirt and contaminants.
2. Maintain 15–35mm gap from beam edges to wall.
3. Apply 50mm band of FR Acrylic around penetration for board adhesion.
4. Install one layer FR Board (60mm 2-S) with  $\geq 50$ mm overlap, tight to the beam.
5. Fix FR Board with 5x100mm steel screws and penny washers, max 25mm from edges and 100mm centres.
6. Apply FR Acrylic bead at all junctions; fill gaps to min 25mm depth.
7. Seal all joints, defects, and exposed board edges with FR Acrylic.
8. Repeat on opposite wall face.
9. Insulation wrap instructions: Refer to services and ratings.

### Services & Ratings (FRR)

Service Penetration	Size	Penetration Seal	Insulation Wrap	FRR
I-Beam	250mm	3 - sided	310mm Wide FIRESTOP Duct Wrap-25	-/120/120
I-Beam	250mm	4 - sided	-	-/120/90

Smoke:  $<0.1\text{m}^3/\text{h}$  Smoke leakage at 200Pa

### Wrap Installation Instructions:

1. Wrap the beam with 310mm wide FIRESTOP Duct Wap-25. No Wrap required within the web of the beam.
2. Secure Wrap to floor slab with 25mm x 1mm steel brace strap using 8G x 45mm masonry screws at max 100mm centers on both sides on the beam.
3. Apply Protecta FR Acrylic to the Protecta FR Board and Firestop Duct Wrap-25 junction.
4. If entire beam is wrapped, ensure a min. 75mm overlap is achieved and secure the wrap with two FIRESTOP cable ties.

### Compliance

**Report** Fire TS Lab  
Report PF23060  
**Pages** 5, 21 & 25  
**Standards** AS1530.4-2014 &  
AS4072.1-2005

Firestop Centre Technical Support:  
Tel: +64 9 483 4000  
[info@firestopcentre.co.nz](mailto:info@firestopcentre.co.nz)  
[www.firestopcentre.co.nz](http://www.firestopcentre.co.nz)

Drawing Rev: 1.1

Scale: NTS

**Disclaimer:** Firestop Centre may change product specifications without notice as part of our ongoing development and testing. All information in this document is provided in good faith and for guidance only. All drawings are for illustration purposes only and may not reflect the actual product. Since we cannot control how the product is installed or the conditions on-site, we do not guarantee the product's performance. We also accept no responsibility for any loss, damage, or injury resulting from the use of this information.